



SKY-FRAME

Frameless insulated sliding doors



SKY-FRAME is a newly developed system for large-surface sliding doors with a frame that can be installed flush with the walls, ceiling and floor – a 20 mm vertical glazing bar where two sections overlap is all that is visible of the frame. This makes for unimpeded panoramic views and threshold-free transitions between the inside and the outside. Besides offering esthetic advantages, the system also meets the highest standards in thermal insulation and safety. Thanks to tracks that can be installed flush with the floor, Sky-Frame doors are ideal for barrier-free and wheelchair-accessible buildings.

| Sky-Frame consists of insulated glazed sections with a glazing strength of 30 mm, to which a profile of fiberglass-reinforced epoxy resin (GRP) has been glued. The sections are placed in aluminum frames built into the floor, wall and ceiling. The sliding sections rest on low-resistance ball-bearing rollers. The vertical aluminum frame components are secured to the GFK profile. Water is drained via a channel installed flush with the floor.

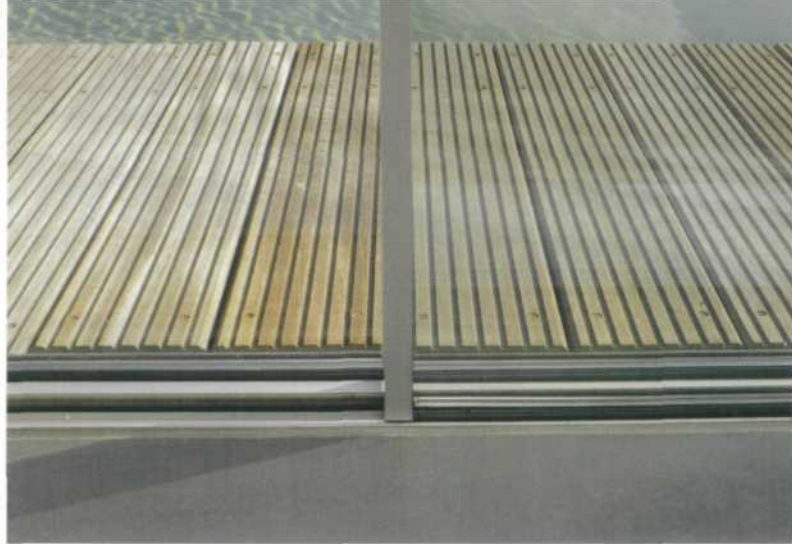
| Thanks to the complete separation of its inner and outer shells, the frame provides excellent insulation values (the rated U-value is $2.1 \text{ W/m}^2\text{K}$). The small frame surface produces top values when calculated over the entire door surface.

| Fixed and sliding sections can be combined as desired, either alternating or with adjoining sliding elements opening in opposite directions. For center openings, however, the vertical glazing bar is wider (30 mm for offset systems, or 80 mm if both sections run in the same track).

| Triple tracks make it possible to slide several elements behind each other. Corners completely out of glass and sliding corner sections are also possible. The maximum surface of the sliding sections is 6 m^2 , with the shorter side not exceeding 2000 mm.

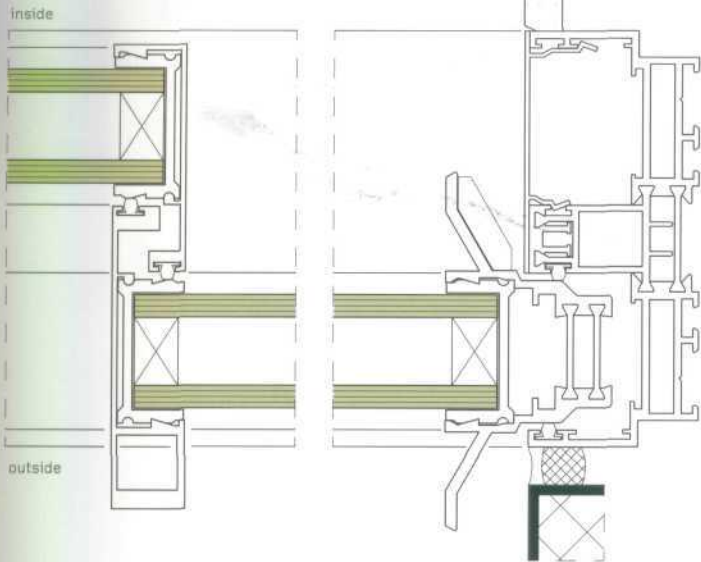
| The latch sits flat against the frame and releases the multipoint locking system when lightly pushed upwards. It can be mounted on one or both sides. It is possible to install a safety cylinder, but this requires a somewhat wider frame.

| The sliding section can be locked into the "ventilation position", creating a rainproof and break-in resistant gap.

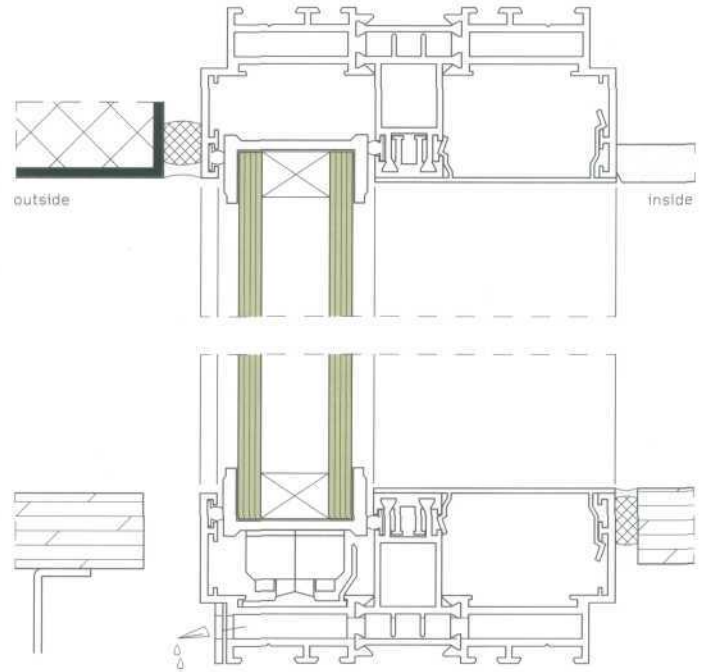


Further information can be found at www.sky-frame.ch

Sections 1:2



Horizontal section of parallel-running sliding door and wall mounting

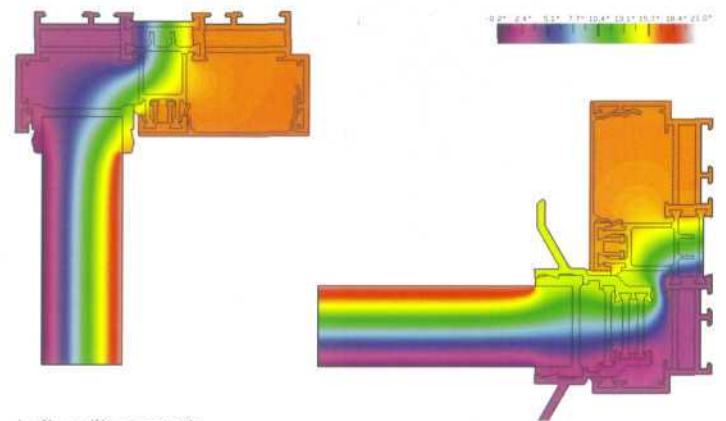


Cross-section of ceiling and floor mounting

U_w -values of 2-section doors

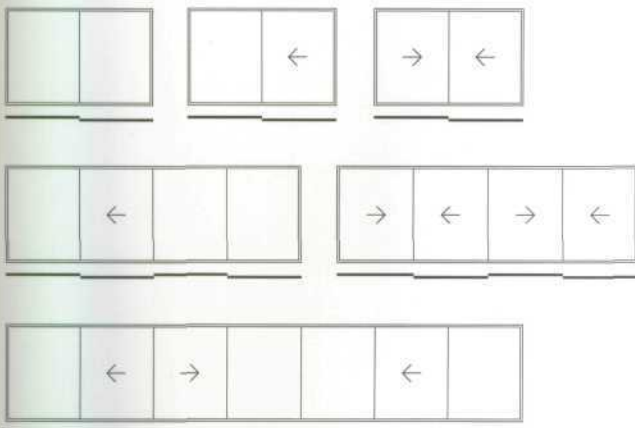
| Measurement in millimeters | | U_g -value of glass | | |
|----------------------------|-------------|-----------------------|-------------|------|
| Door size | Glass size | 1.1 | 1.2 | 1.3 |
| | | U_w -value of door | | |
| 2000 x 1500 | 934 x 1400 | 1.44 | 1.53 | 1.61 |
| 3000 x 1500 | 1434 x 1400 | 1.38 | 1.47 | 1.56 |
| 2000 x 2200 | 943 x 2100 | 1.39 | 1.48 | 1.57 |
| 3000 x 2200 | 1434 x 2100 | 1.33 | 1.42 | 1.51 |
| 4000 x 2200 | 1934 x 2100 | 1.30 | 1.39 | 1.48 |
| 2000 x 2600 | 934 x 2500 | 1.38 | 1.47 | 1.56 |
| 3000 x 2600 | 1434 x 2500 | 1.31 | 1.41 | 1.50 |
| 4000 x 2600 | 1934 x 2500 | 1.28 | 1.38 | 1.47 |

Isothermal courses

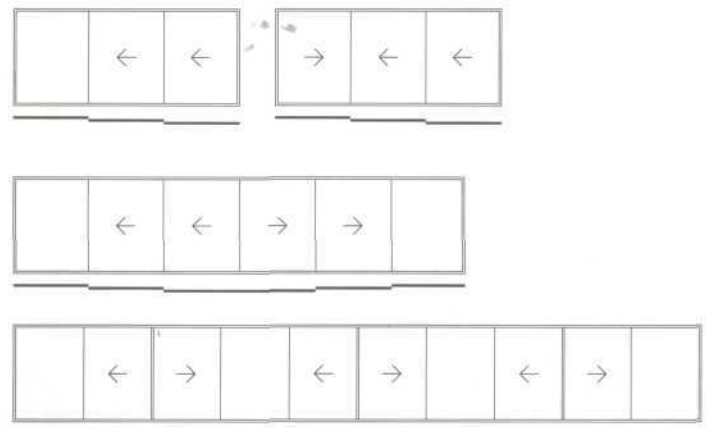


Left: ceiling mount
Right: wall mount with opening device

Views of available openings with a 2-track sliding door



Views of available openings with a 3-track sliding door





Elig pictures | Architecture | Winterthur | Photo Lucie Degrande, Zürich

SKY-FRAME

Made in Switzerland. Patent pending.

Further information can be found at
www.sky-frame.ch

R&G Metallbau AG
Bergwies
CH-8548 Ellikon an der Thur
T +41 52 369 02 30
F +41 52 369 02 31
www.rg-metallbau.ch
info@rg-metallbau.ch